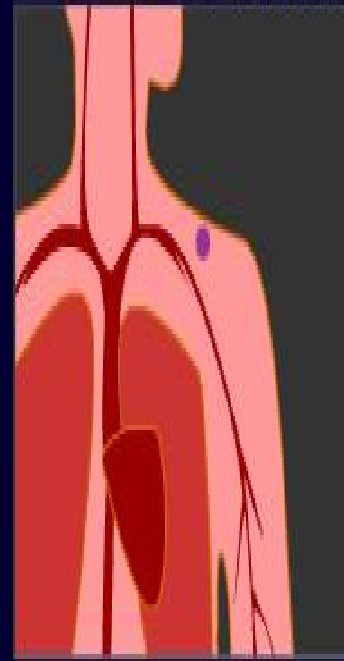
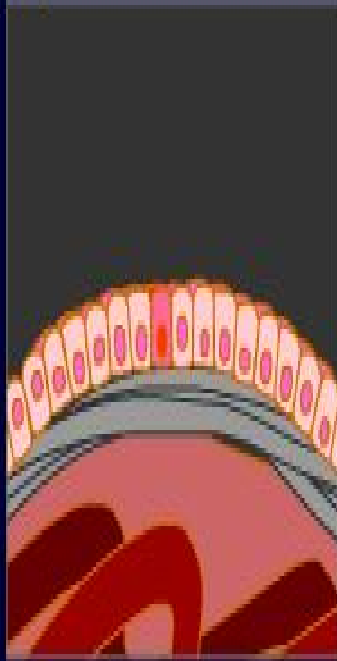
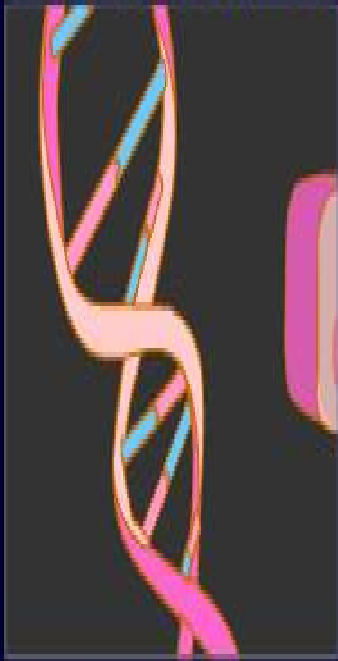


How Cancer Grows

NOVA ONLINE



INTRODUCTION

This interaction illustrates the growth and spread of a type of cancer known as carcinoma. Carcinomas originate in the body's epithelial tissues, which are thin cell layers, often a single cell deep, that line body cavities and outer surfaces. Epithelial tissues are found in many organs and glands.

Use the arrows to move forward and backward through time, or jump around by clicking on various boxes. Click on an orange bar to replay an animation.